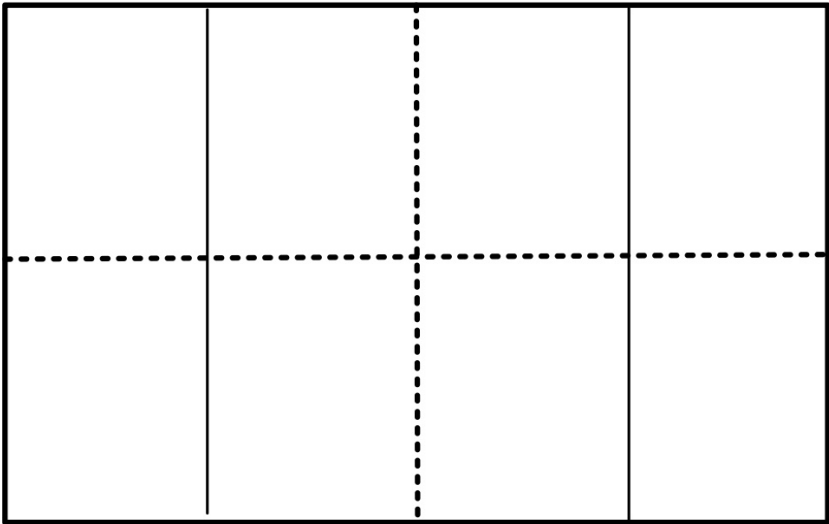


April 14, 2015

**Assessment
Project**

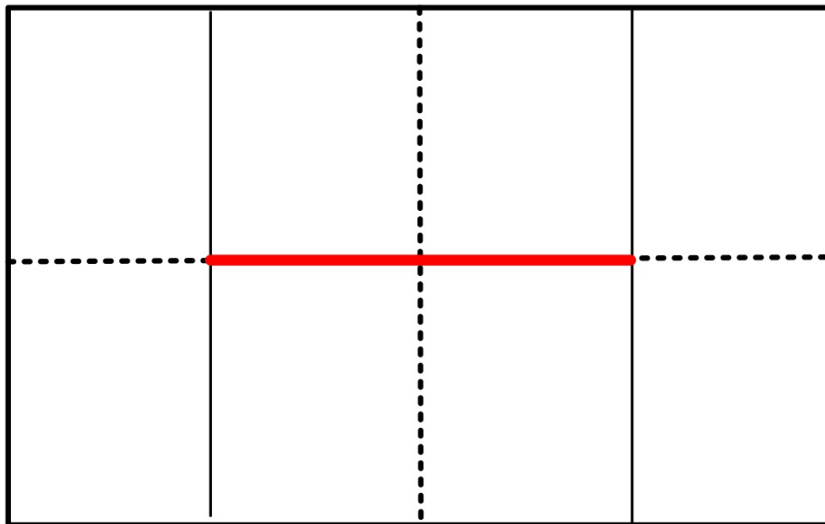
Sparkly

Everyone needs a booklet made as follows from a piece of 11x17 white paper:

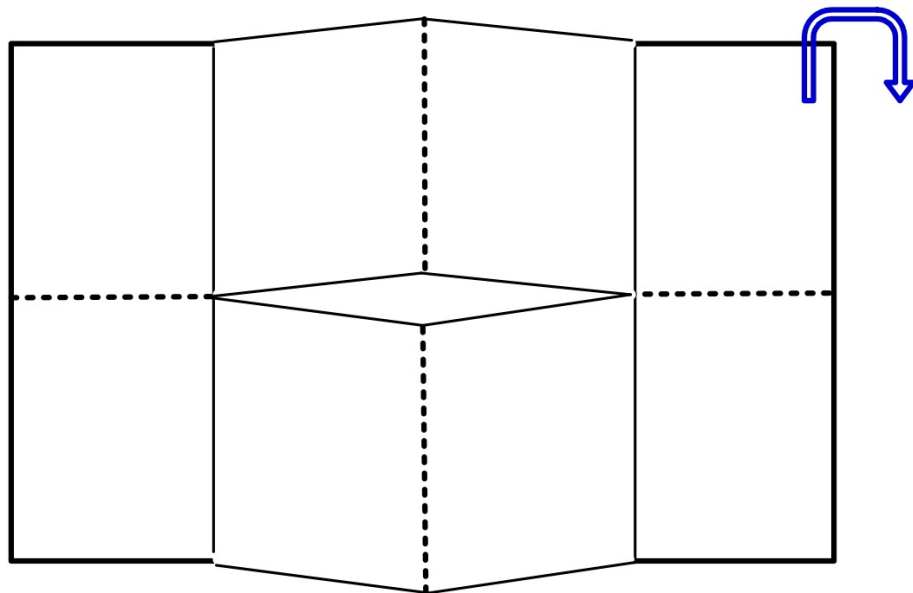


———— Mountain fold
----- Valley fold

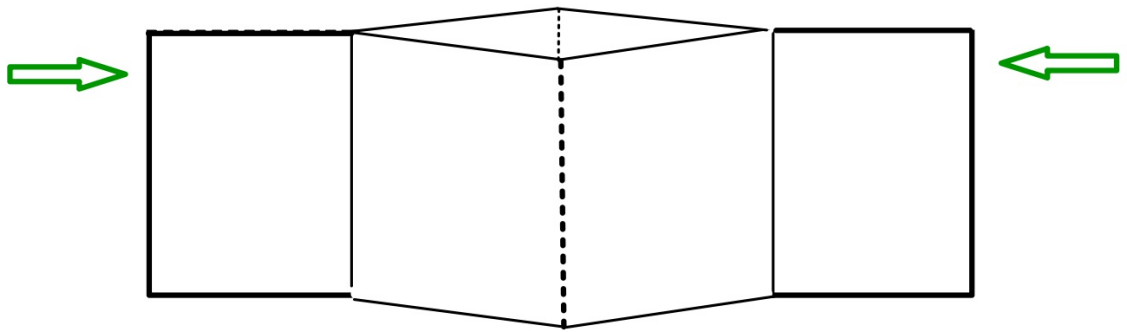
Cut on the red line

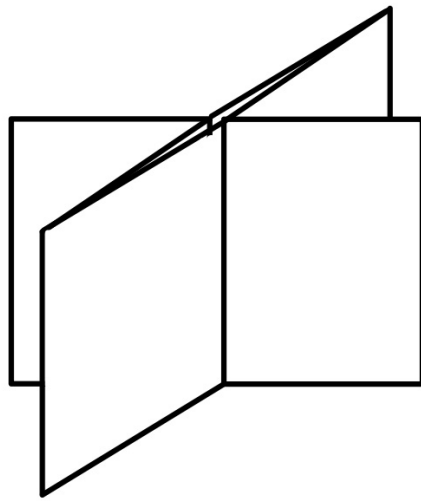


Fold the top half back.



Push both ends toward the middle.





Flatten it then fold in in half forming a booklet with four pages.

The front is the cover and should include:

Your name
Class period

TITLE

The next two pages are:

Adjacent Angles	Vertical Angles
1	2

Include definitions, examples, non-examples, algebraic connections, and at least one algebra problem connected to the topic of the page.

The next two pages are:

**Complementary
Angles**

3

**Supplementary
Angles**

4

The next two pages are:

Triangles

Quadrilaterals

5

6

The back cover will have the scoring rubric that you will glue on.

