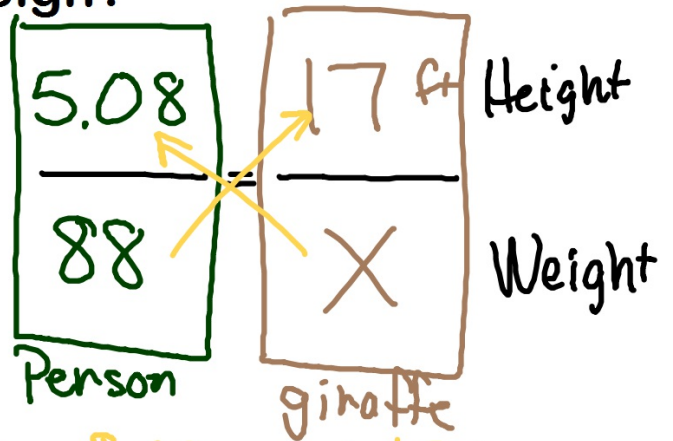
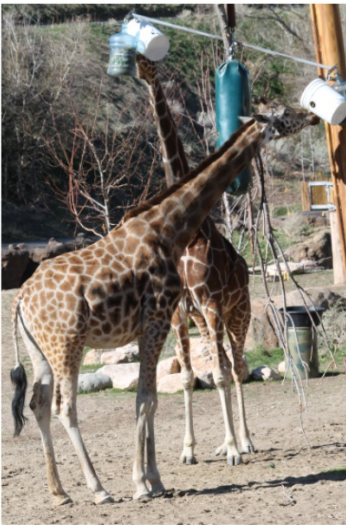


3/31 Field trip follow-up



If you were as tall as a full-grown GIRAFFE,
how much would you weigh?

5'11" = 5.083
88 lbs



$\frac{1}{12} = 0.083$

$5.08x = 1496$

$x = 294.5 \text{ lbs}$

$1496 \div 5.08 = 294.488189$

If you were the same weight as a full-grown ELEPHANT, how tall would you be?

5 ft
80 lbs



Elephant Person

$$\frac{X}{12,000} = \frac{5}{80}$$

H
W

$$\frac{80x}{80} = \frac{60,000}{80}$$
$$x = 750 \text{ ft}$$

$$60000 \div 80 = 750$$

If you weighed the same as a RHINO, how tall would you be?

$$5'4'' = 5\frac{4}{12} = 5.\bar{3}$$
$$130 \text{ lbs}$$



Rhino	Person	
X	5.3	H
<hr/>	<hr/>	
1200	130	
$\frac{130X}{130} = \frac{6360}{130}$		W
	$X = 48.9 \text{ ft}$	

If you were the same weight as a full-grown male ORANGUTAN, how tall would you be?

$5'2'' = 5\frac{2}{12} = 5.1\bar{6}$ orangutan person

74 lbs



$$\begin{array}{r} x \quad \swarrow \quad \nwarrow \quad 5.2 \text{ ft} \quad H \\ \hline 265 \text{ lbs} \quad 74 \text{ lbs} \quad W \end{array}$$

$$\frac{74x}{74} = \frac{1378}{74}$$

$$x = 18.6 \text{ ft}$$

If you were the same weight as a LION, how tall would you be?



If you were the same weight as a Colobus Monkey, how tall would you be?



If you were the same weight as a **RIVER OTTER**, how tall would you be?

... a **SEA LION**?

... a **GRIZZLY BEAR**?

... a **PEACOCK**?

If you were the same height as a **MEERCAT**, how much would you weigh?

... a **GRAY WOLF**?

... a **BALD EAGLE**?

...an **OSTRICH**?