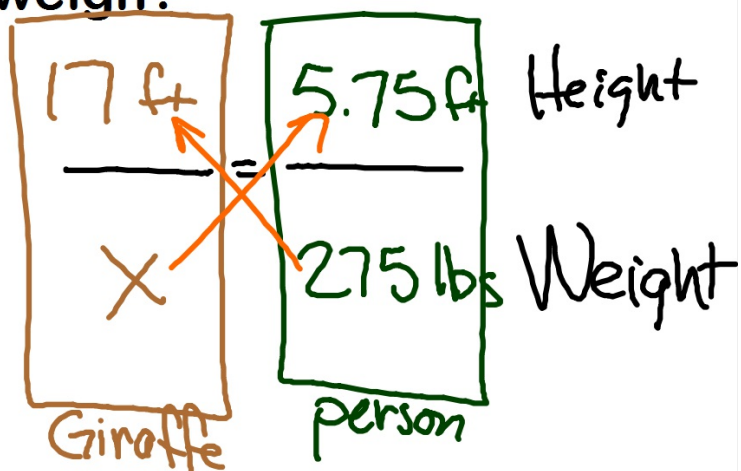
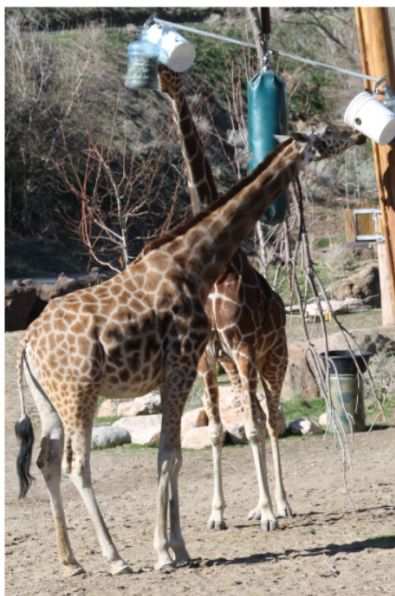


## 3/31 Field trip follow-up



If you were as tall as a full-grown GIRAFFE,  
how much would you weigh?

$$5'9'' = 5.75\text{ft}$$
$$275\text{lbs}$$



$$\frac{5.75x}{5.75} = \frac{4675}{5.75}$$
$$x = 813\text{lbs}$$

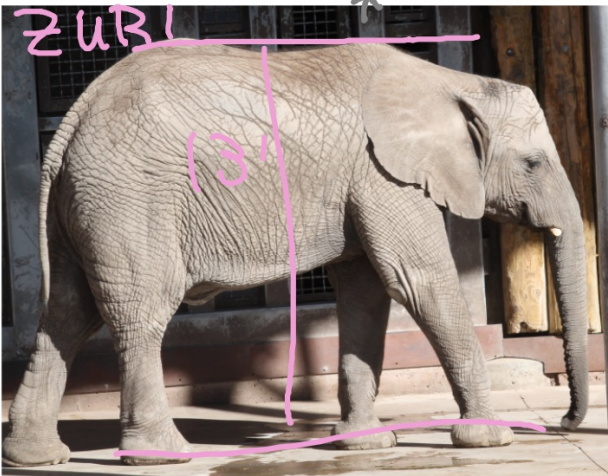
$$4675 \div 5.75 = 813.043478$$

If you were the same height as a full-grown ELEPHANT, how much would you weigh?

4' 11" = 4.916

99 lbs

$11 \div 12 = 0.916667$



Elephant Person

$$\begin{array}{r} 13 \\ \times 4.9 \\ \hline \end{array} = \begin{array}{r} 4.9 \text{ ft} \\ \times 99 \text{ lbs} \\ \hline \end{array}$$

H

W

$$99 \times 13 = 1287$$

$$\begin{array}{r} 4.9x = 1287 \\ \hline 4.9 \quad \quad 4.9 \\ \hline x = 262.7 \text{ lb} \end{array}$$

$1287 \div 4.9 = 262.653061$



If you weighed the same as a RHINO, how tall would you be?

$$5'1'' = 5.08\bar{3}$$

$$1 \div 12 = 0.083333$$

$$89 \text{ lbs}$$



Rhino	Person	
$\frac{x}{1500 \text{ lbs}}$	$\frac{5.1 \text{ ft}}{89 \text{ lbs}}$	H
		W
$5.1 \times 1500 = 7650$		
$\frac{89x}{89} = \frac{7650}{89}$		
$x = 86 \text{ ft}$		

$$7650 \div 89 = 85.955056$$

If you were the same weight as a full-grown male ORANGUTAN, how tall would you be?

$$5'1'' = 5.08\bar{3}$$

$$95 \text{ lbs}$$



Orangutan      person

$$\begin{array}{r} x \nearrow \quad \nwarrow 5.1 \\ \hline 265 \quad \quad 95 \\ \hline \end{array}$$

$$5.1 \times 265 = 1351.5$$

$$\begin{array}{r} 95x = 1351.5 \\ \hline 95 \quad \quad 95 \\ \hline \end{array}$$

$$x = 14.2 \text{ ft}$$

H  
W

$$1351.5 \div 95 = 14.226316$$

If you were the same weight as a LION, how tall would you be?

$$5'3'' = 5.25 \text{ ft}$$
$$90 \text{ lbs}$$



Lion	Person	
<del>X</del>	<del>5.3</del>	H
<del>420</del>	<del>90</del>	W

$$\frac{90x}{90} = \frac{2226}{90}$$

$$x = 24.7 \text{ ft}$$

$$2226 \div 90 = 24.733333$$

If you were the same weight as a Colobus Monkey, how tall would you be?

$5'3'' = 5.25$   
 121 pounds  
 $\frac{3}{12} = 0.25$

<sup>monkey</sup>  
 Round to one decimal

	person	
<del>X</del>	5.3	H
32	121	W

$121x = 169.6$   
 $x = 1.4 ft$

$169.6 \div 121 = 1.401653$



If you were the same weight as a **RIVER OTTER**, how tall would you be?

... a **SEA LION**?

... a **GRIZZLY BEAR**?

... a **PEACOCK**?

If you were the same height as a **MEERCAT**, how much would you weigh?

... a **GRAY WOLF**?

... a **BALD EAGLE**?

...an **OSTRICH**?