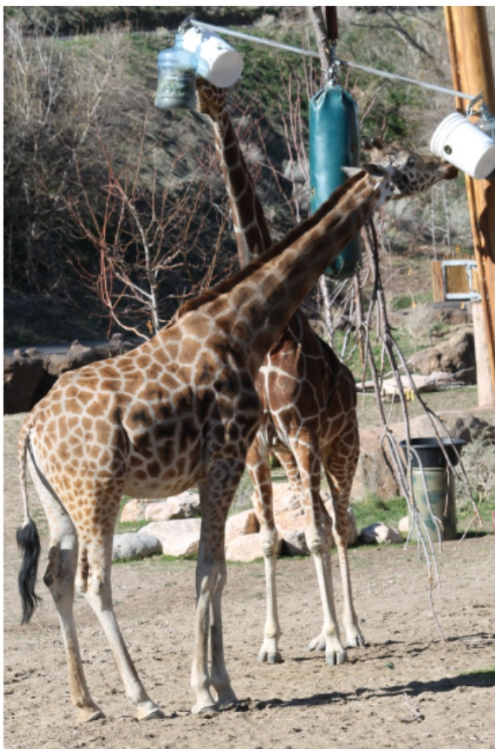


## Field trip follow-up



If you were as tall as a full-grown GIRAFFE, how much would you weigh?



$$\frac{5x}{5} = \frac{1745}{5}$$
$$x = 289 \text{ lbs}$$

If you were the same height as a full-grown ELEPHANT, how much would you weigh?

$$4' \frac{9}{12}'' = 4.75'$$
$$90 \text{ lbs}$$



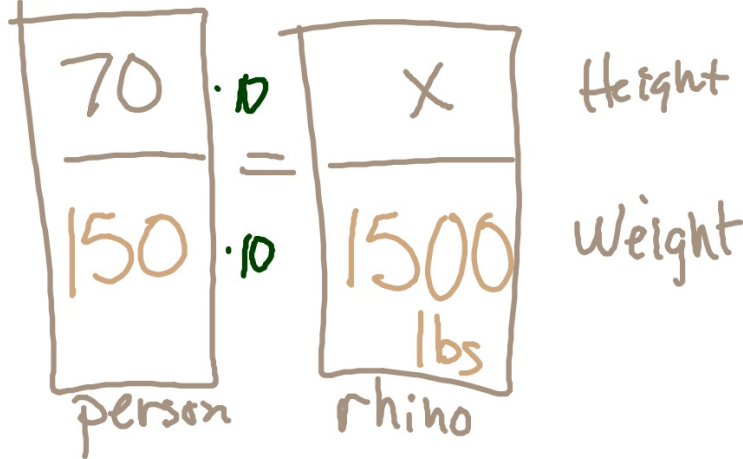
$\frac{4.75}{90}$	$=$	$\frac{13}{x}$	Height
			Weight

$$\frac{4.75x}{9.75} = \frac{1170}{4.75}$$

$$x = 246.3 \text{ lbs}$$

If you weighed the same as a RHINO, how tall would you be?

$$5'10'' = \frac{70}{150} \text{ in}$$



$$700 \text{ in} = X$$

$$58.3' = X$$

If you were the same weight as a full-grown female ORANGUTAN, how tall would you be?

$$4'8'' = 4.6\bar{6}$$
$$68\frac{1}{2} \text{ lbs}$$



person	orangutan	
4.7'	X	H
68	150	W

$$\frac{68x}{68} = \frac{705}{68}$$
$$x = 10.4 \text{ ft}$$

$$705 \div 68 = 10.367647$$

If you were the same weight as a LION, how tall would you be?

$$5'3'' = 5.25'$$

$$150 \text{ lbs}$$



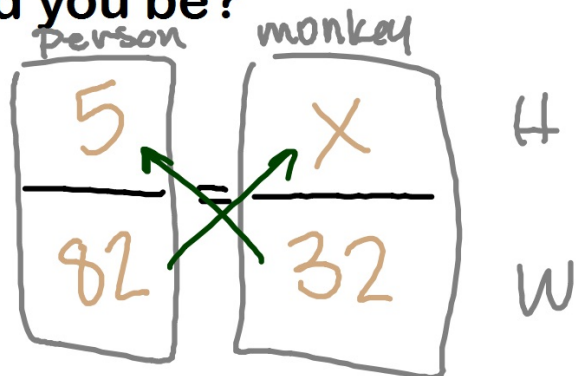
Person	Lion	
5.25'	X	H
150 lbs	420 lbs	W

$$\frac{150x}{150} = \frac{2205}{150}$$
$$x = 14.7 \text{ ft}$$

$$2205 \div 150 = 14.7$$

If you were the same weight as a Colobus Monkey, how tall would you be?

5'  
82 lbs



$$\frac{82 \cdot x}{82} = \frac{160}{82}$$
$$x = 2'$$

$$160 \div 82 = 1.95122$$

- ① If you were the same weight as a **RIVER OTTER**, how tall would you be? (28 lbs)
- ② ... a **SEA LION**? 660 lbs
- ③ ... a **BROWN BEAR**? 1700 lbs
- ④ ... a **PEACOCK**? 13 lbs
- ⑤ If you were the same height as a **MEERCAT**, how much would you weigh? 12"
- ⑥ ... a **WOLF**? 2.8'
- ⑦ ... a **BALD EAGLE**? 34"
- ⑧ ...an **OSTRICH**? 9.2'